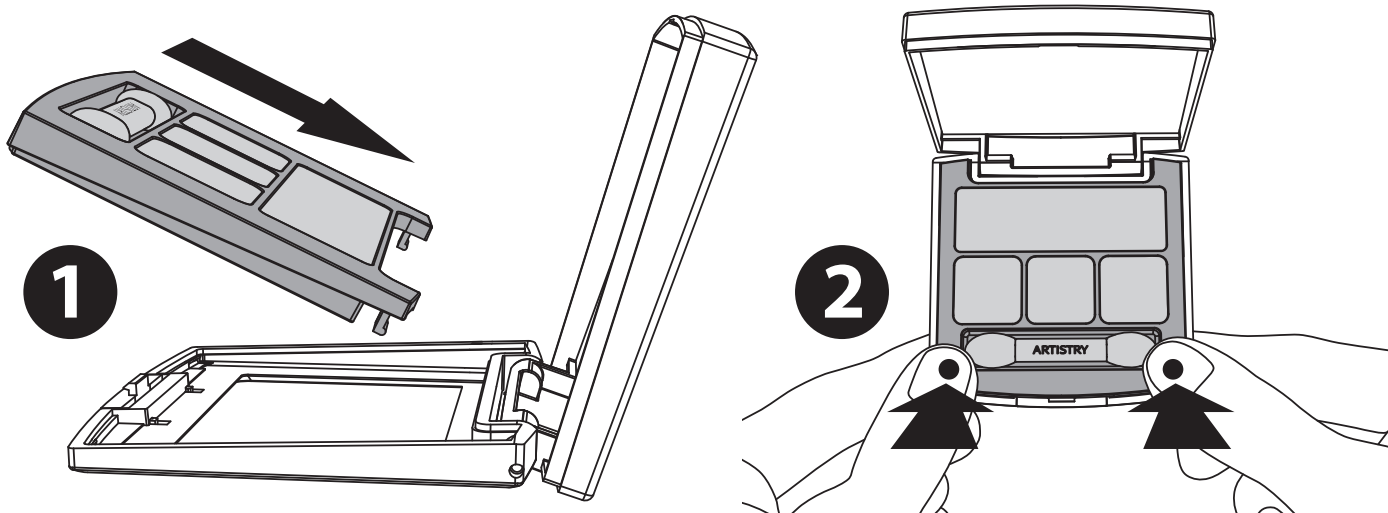


# ARTISTRY®

## HOW TO FILL OR REFILL THE NEW ARTISTRY SIGNATURE COLOR® EYE SHADOW QUAD COMPACT:

To fill the compact, align the Artistry Signature Color® Eye Shadow Quad refill with the base of the opened, empty compact, place the two tabs on the back of the refill in the base of the compact first, and then press the front two corners of the refill until you hear both sides click.



To remove the refill, close the compact, turn it upside down so the bottom label is facing you, and push the two dots on the label (corners closest to the Artistry® logo on the compact) until you hear the release click. Open the compact and remove the refill.

