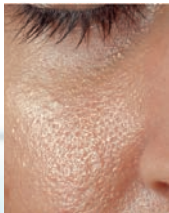
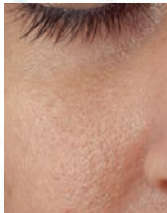


## INSTANT RESULTS



**BEFORE**



**AFTER**

# ARTISTRY® INTENSIVE SKINCARE *ADVANCED SKIN REFINISHER*



Order through your Amway Independent Business Owner

IBO Name:

---

Contact Information:

---

---

---

FORWARD BEAUTY

# ARTISTRY®

# VISIBLY REDUCES PORE SIZE *INSTANTLY* FOR VELVETY SMOOTH SKIN

An exclusive blend of optical diffusers and natural ingredients reduces the appearance of pores and refines skin texture with the power of a professional fractional laser treatment.\* From visibly tightening pores to sweeping away dullness, skin looks softer, smoother, and more even-textured after just one use.

## DISCOVER THE DIFFERENCE

The advanced technology of the Artistry® Intensive Skincare Advanced Skin Refinisher delivers visibly reduced pore size with a smoother, softer, and all-around more gorgeous finish.

- Long lasting oil control
- Patented oat extract and NMF sugars exfoliate, unclog pores, and smooth roughness.
- Includes Lentil Seed extract which was clinically tested to reduce the appearance of pores by 62% in 4 weeks.
- Java tea extract provides oil control and reduces the appearance of pore size.
- Star fruit extract visibly reduces pore size by improving elasticity and tightening pores.

\*Results not equal to cosmetic/surgical procedures.

## ARTISTRY® INTENSIVE SKINCARE ADVANCED SKIN REFINISHER

USE DOUBLE SIDED TAPE

SKU: 11-5408  
TO ORDER THE  
FULL SIZE PRODUCT

LIFT TO EXPERIENCE

## USE INSTRUCTIONS

Apply two pumps of serum onto clean skin every morning and evening after cleansing and toning, avoiding the eye area. Follow with Artistry® eye cream and moisturizer.